

Cooling Solutions for CXB-GM45/-GL40 Modules

COM Express™ Family



Description

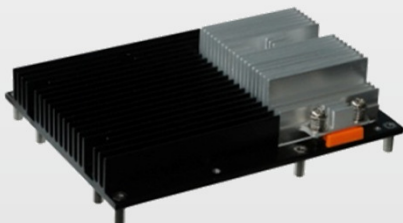
COM Express™, an open specification of the PICMG (PCI Industrial Computer Manufacturer Group), is a module concept to bring PCI Express and other latest technologies like SATA, USB 2.0 and LVDS on a COM (Computer On Module).

Depending on the computing performance, the processor and chipset technology and the system environment COM Express modules require different cooling measures.

MSC has developed various solutions that help the system designer to quickly solve the heat dissipation problems and ensure optimal environmental conditions for the module.

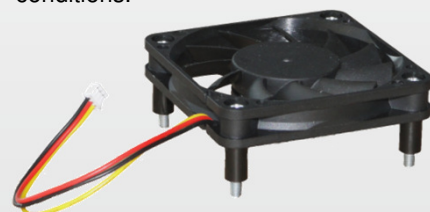
Passive cooling

Optimized heat sinks for best cooling performance even in industrial environment.



Active cooling

Heat sinks combined with a dedicated speed controlled fan. An off-the-shelf solution for demanding ambient conditions.



Heat spreaders

Due to the relatively high power dissipation of the processor technology used on CXB-GM45/-GL40 modules MSC has developed cooling solutions that have better cooling efficiency than heat spreader based solutions.

Currently no heat spreaders are offered.

Passive cooling

For systems with sufficient air flow around the module, either passive through convection or forced by a system internal fan, MSC's passive cooling solution may be used.

Passive cooling solutions consist of an extruded aluminum heat sink with heat conducting stacks on the bottom side.



Highlights

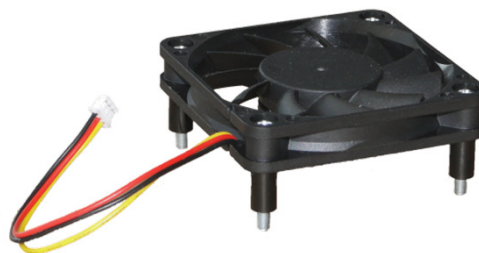
- Self-aligning floating element for processor cooling
- Heat conducting stacks on bottom side
- Threaded (M2.5) or through-hole version available
- Prepared for optional fan
- Screws for mounting included
- Two different profile heights available

Dimensions	Note
<p>Height: 32 mm (high profile heat sink for soldered BGA processor) 35 mm (high profile heat sink for socketed PGA processor) 27 mm (low profile heat sink for soldered BGA processor) 29 mm (low profile heat sink for socketed PGA processor) Maximum heights measured from top of PCB to top of heat sink. May vary when transportation locks are removed.</p> <p>Outline: 125 x 95 mm</p>	<p>The high-profile heat sink has been developed for demanding environmental conditions. With the dedicated fan kit mounted on top it allows ambient temperatures up to 60° C. The low-profile heat sink may be used for lower ambient temperatures or for processors with low thermal power dissipation.</p>
Material	
<p>Fix part: Black anodized aluminum Floating part: Blank aluminum</p>	

Order Number	Description	Reference
1019293	High-profile heat sink for CXB-GM45/-GL40 (socketed PGA processor) with through-hole standoffs (optional fan kit is not included)	MSC CXB-GM45-01 HSI-001
on request	High-profile heat sink for CXB-GM45 (soldered BGA processor) with through-hole standoffs (optional fan kit is not included)	MSC CXB-GM45-02 HSI-001
36040	Low-profile heat sink for CXB-GM45/-GL40 (socketed PGA processor) with through-hole standoffs (optional fan kit is not included)	MSC CXB-GM45-03 HSI-001
36044	Low-profile heat sink for CXB-GM45 (soldered BGA processor) with through-hole standoffs (optional fan kit is not included)	MSC CXB-GM45-04 HSI-001

Active cooling

In cases where an active cooling is required MSC offers a fan kit for mounting on top of the heat sink.



Highlights

- 80 mm x 80 mm fan with tacho signal and special connector for MSC COM Express modules
- Spacers and screws included

Dimensions	Excerpt of fan data sheet
<p>Height: 49 mm (low profile heat sink with fan) 53 mm (high profile heat sink with fan) Maximum height of heat sink with fan mounted. Measured from top side of module PCB to top side of fan.</p>	<p>Operating Temperature: -10° C~70° C (normal humidity) Storage Temperature: -20° C~75° C (normal humidity) Rated Speed: 3 600rpm±10% In free air at rated voltage; testing speed after continuous 3 minute operation at ambient temperature of 25° C Airflow: 51.65CFM; 1.46m³/min At rated voltage; at zero static pressure Life expectancy [L10]: More than 90% shall keep running after continuous operation of 50.000 hours at rated voltage in 40° C ambient temperature and 65% relative humidity condition. Fan life should be redefined when above conditions are changed.</p>
Note	
<p>a) Free air circulation above the fan is necessary to assure proper air flow! b) Locking the rotor when it's running may damage the fan as well as the control circuit on the COM Express module!</p>	

Order Number	Description	Reference
36052	Fan kit for high-profile heat sinks	MSC CXB-GM45-01 FKT-001
36054	Fan kit for low-profile heat sinks	MSC CXB-GM45-02 FKT-001

Corporate Offices

MSC Vertriebs GmbH, Industriestraße 16, 76297 Stutensee, Tel. +49 7249 910 – 0, Fax +49 7249 7993 0
MSC Vertriebs GmbH, Design Center München-Neufahrn, Zeppelinstr. 1A, 85375 Neufahrn, Tel. +49 8165 906 – 100, E-mail: boards@msc-ge.com,
Technical Support COM: Tel. +49 8165 906 – 200, E-mail: support.boards@msc-ge.com, Internet: www.msc-ge.com/support-boards

Sales Offices Germany

München-Dornach · Tel. +49 89 945532 – 0 · **Berlin** · Tel. +49 30 720089 - 0 · **Hamburg** · Tel. +49 4106 7764 - 0 · **Hannover** · Tel. +49 511 616847 - 0 ·
Braunschweig · Tel. +49 5341 2999 - 0 · **Düsseldorf** · Tel. +49 211 92593 - 0 · **Aachen** · Tel. +49 2408 709 – 0 · **Koblenz** · Tel.+49 2630 96239 - 11 ·
Rodgau · Tel. +49 6106 26769 – 0 · **Wiesbaden** · Tel. +49 611 97320 - 0 · **Frankenthal** · Tel. +49 6233 344 - 0 · **Stuttgart** · Tel. +49 711 78336 - 0 ·
Freiburg · Tel. +49 761 8819 – 819 · **Nürnberg** · Tel. +49 911 43970 - 0 · **Jena** · Tel. +49 3641 6825 - 0 · **Stutensee** · Tel. +49 7249 910-173

Sales Offices Europe

MSC Vertriebs GmbH · Leobersdorf · Tel. +43 2236 205066 - 0 · **Velden** · Tel. +43 4274 23222 - 17 · **MSC Schweiz AG · Biel/Bienne** · Tel. +41 32 366 8565 ·
Montreux · Tel. +41 21 965 3500 · **Rotkreuz** · Tel. +41 41 785 8200 · **Volketswil** · Tel. +41 43 355 33 66 ·
MSC Iberia S.L. · Barcelona · Tel. +34 931 505 505 · **Madrid** · Tel. +34 91 72169 - 51 ·
MSC France · Paris · Tel. +33 1 45128230 · **Strasbourg** · Tel. +33 3 88 651843 · **Lyon** · Tel. +33 4 72 756020 ·
MSC Italia Srl · Tel. +39 039 63089-1 · **MSC Nederland BV** · Tel. +31 78 6920 - 150 · **MSC Belgium Office** · Tel. +32 2 452 6451 ·
MSC (UK) LTD. · Brighton · Tel. +44 1273 622446, **Weybridge** · Tel. +44 1932 268990 · **Milton Keynes** · Tel. +44 1908 263999 ·
MSC (Scotland) LTD. · Tel. +44 1506 460555 · **MSC Representative (DK) MK Nordic ApS** · Tel. +45 24 252745 ·
MSC-Vertriebs-CZ s.r.o. · Blansko · Tel. +420 516 411494 - 15, **Prague** · Tel. +420 251 261 130 ·
MSC-Vertriebs-SK s.r.o. · Zilina · Tel. +421 41 5001243 · **MSC Budapest Kft.** · Tel. +36 1250 90 - 40 ·
MSC Polska Sp. z o.o. · Tel. +48 323 3054 - 50 · **MSC-Mibatron s.r.l. · Bucharest** · Tel. +40 31 1023466 · Tel. +40 21 2302530 ·
MSC Vertriebs GmbH · Istanbul · Tel. +90 216 411 2333

